



**Ethernet Packet Generator**

# **Getting Started Guide**

**Version 2.0.2**

## BOX CONTENTS

The shipping carton contains:

- APG Unit
- Universal 12Vdc 5A Power Supply & local mains lead
- 1m USB Type B lead
- Getting Started Guide
- Axtrinet Resource CD for Windows and Linux:  
USB Drivers, APG GUI Application, APG TCL API

Visit [www.axtrinet.com/downloads](http://www.axtrinet.com/downloads) to download the latest documentation and software.

## MINIMUM SYSTEM REQUIREMENTS

---

|                   |  |
|-------------------|--|
| <b>Processor</b>  | Pentium-class processor or equivalent                            |
| <b>Memory</b>     | 2GB (4GB recommended)  |
| <b>Disk Space</b> | 15MB   |
| <b>OS</b>         | 64bit (x86_64) Linux systems<br>Microsoft Windows 7 / 8.x / 10.x |
| <b>Interfaces</b> | Minimum: USB 2.0<br>Preferred: USB 2.0 & 10/100Base-T            |

---

## LINUX INSTALLATION

The Axtrinet APG Linux package contains the GUI application and the system configuration file.

The GUI requires X-Windows to be running.

There are 4 installation formats provided for convenience:

- Simple tar
- Pacman
- RPM
- Deb

Pick the one that suits the distribution and the package should install with the normal package handling tools or use the commands below.

Currently all packages are for 64bit (x86\_64) linux systems. The package files may not have all package dependencies because package names vary between different linux distributions.

The tools have minimal dependencies, although the main dependency to be resolved is the older version of libusb-0.1.

## Pacman

Install with:

```
pacman -U apgcontrol-2.0.2-1-x86_64.pkg.tar.xz
```

Remove with:

```
pacman -R apgcontrol
```

## RPM

Install with:

```
rpm -U apgcontrol-2.0.2-1.x86_64.rpm
```

or:

```
yum localinstall apgcontrol-2.0.2-1.x86_64.rpm
```

Remove with:

```
rpm -e apgcontrol
```

There are a set of MD5/SHA1/SHA256 sums for the package files.

The package includes a desktop link that should appear under Network tools.

## If it doesn't work

Provided the package install worked, once installed there should be an executable 'apgcontrol' in /usr/bin. If it does not run then check for missing libraries with:

```
ldd /usr/bin/apgcontrol
```

## Dependencies

The following packages are known to be needed:

|                  |                                |
|------------------|--------------------------------|
| On arch:         | libusb-compat, libxft, libpcap |
| On centos: (rpm) | libusb, libXft, libpcap        |
| On Suse: (rpm)   | libusb-0, libpcap              |

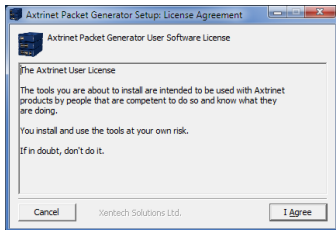
## WINDOWS SOFTWARE INSTALLATION

1. Insert the CD.
2. Run the installation file in the Windows directory and follow the on-screen instructions to install the USB driver, APG Control Interface GUI and shortcuts.

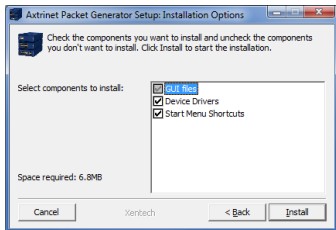



**DO NOT CONNECT THE AXTRINET  
PACKET GENERATOR TO THE  
WINDOWS PC UNTIL THE  
INSTALLATION IS COMPLETE.**

### 3. Read and accept the software Licence Agreement:

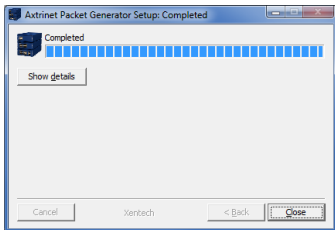


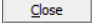
### 4. Select the components to install:



Click  to install the selected components.

5. The window changes to display the installation progress.



6.  completes the installation process.

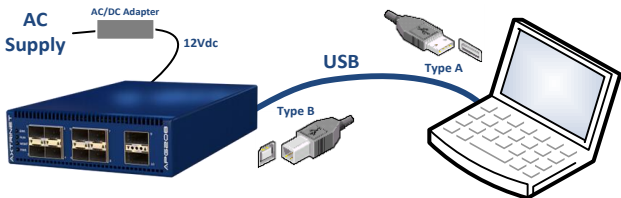
## CONNECTING THE HARDWARE

- Attach the ac mains supply lead to the power adapter, connect the adapter to the unit and apply power.
  - The POWER LED will be illuminated ORANGE for ~60 seconds while the hardware configures.
  - The POWER LED will turn GREEN after successful configuration, or RED if the hardware has failed to configure.



**If the POWER LED turns RED after configuration, contact AXTRINET for further support.**

- Connect the management PC to the APG unit using the USB Type B lead (provided).



## TESTING THE INSTALLATION

- Start the APG Control Interface:
  - On Linux, click the **home / Axxtrinet Control** icon or execute **user/bin/apg\_control**
  - On the Windows Start menu, locate the Axxtrinet directory and click on the **APG Control** icon.



- The APG Control Interface window is displayed and the new unit will appear as a USB connection:



**If the unit does not appear in the Control Interface, check that the unit is turned on and the USB lead is connected.**

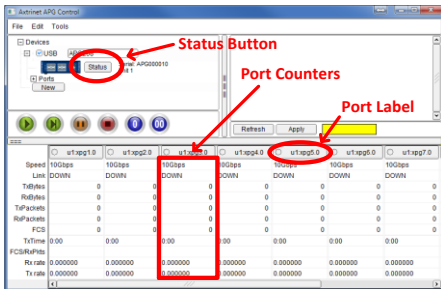


**If installing the drivers onto a PC for the first time, it may be necessary to re-run the installation process after the device has been connected as the USB drivers may not be enabled.**

- To connect to the unit, click on the Checkbox next to the device.



If the unit port counters and unit Status button are displayed, the drivers and APG Control Interface have been successfully installed:



- Click on the Port Counters to view the port stream configuration.
- Click on the Port Label to enable/disable port control.

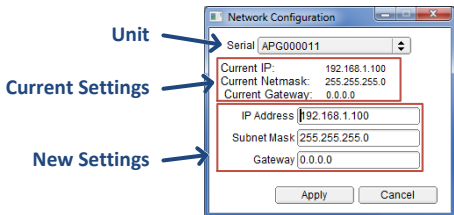
## SETTING THE IP ADDRESS



**You may need to contact your Network Administrator to obtain the required IP and Gateway Addresses**

To change the IP Address of the unit:

- On the MENU BAR: Tools → Network Configuration  
The IP Configuration Window opens:



- Set the IP Address, Mask and Gateway Address, then click APPLY



Xentech Solutions Ltd  
Suite 6 Stanta Business Centre  
3 Soothouse Spring  
St Albans  
AL3 6PF  
United Kingdom

Tel: +44 (0)1727 867795  
Email: [support@axtrinet.com](mailto:support@axtrinet.com)

© 2017 Xentech Solutions Ltd – All rights reserved